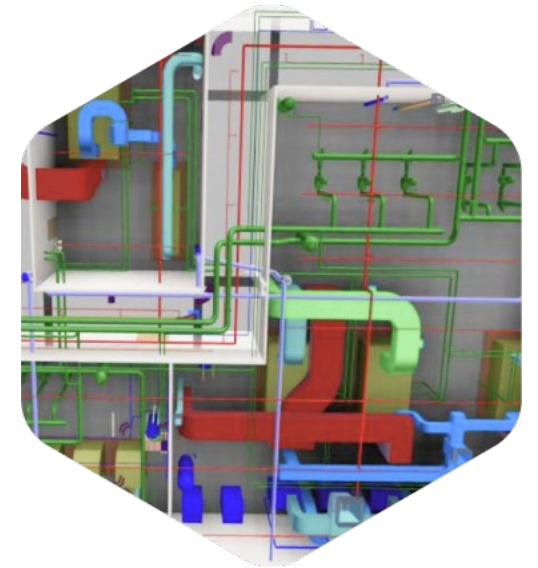




# COMPANY OVERVIEW

Advenser is a multinational, multi-disciplined engineering company delivering advanced engineering services & solutions to the construction industry through innovative practices, utilizing BIM and advanced technological tools. Since 2007, we have accumulated extensive experience in the AEC industry, delivering a variety of complex projects across multiple countries with a proven track record of success.

Our engineering team, with a workforce of more than 300+ Engineers with Architectural, Structural and MEP experience, have the expertise and skillsets to meet the demands of any complex project anywhere in the world. We streamline our services to match & adapt to your constantly evolving needs.



**1K+**  
CLIENTS



**20+**  
COUNTRIES



**10K+**  
PROJECTS



**300+**  
PEOPLE



# ADVENSER DIFFERENTIATORS

---



## Proven Expertise and Global Presence

Serving clients worldwide with a proven track record of successfully delivering complex projects.



## Strong Focus on Quality and Accuracy

Multi-tiered quality checks ensure precise, error-free deliverables every time.



## Flexible and Scalable Resource Pool

Easily scale teams up or down to match changing project needs without delays.



## Competitive Pricing and Cost Predictability

Transparent, cost-effective pricing structures with no hidden surprises.



## Technology-Driven Processes

Advanced tools and automation streamline workflows and maximize productivity.



## Client-Centric Engagement

Personalized service and proactive communication tailored to your project goals.



## Domain-Specific Teams

Dedicated specialists with deep industry knowledge for domain-specific solutions.



## Robust Data Security

Strict compliance with global data protection standards to safeguard your information.



## Onshore-Offshore Hybrid Support

A balanced delivery model that blends local presence with global execution strengths.

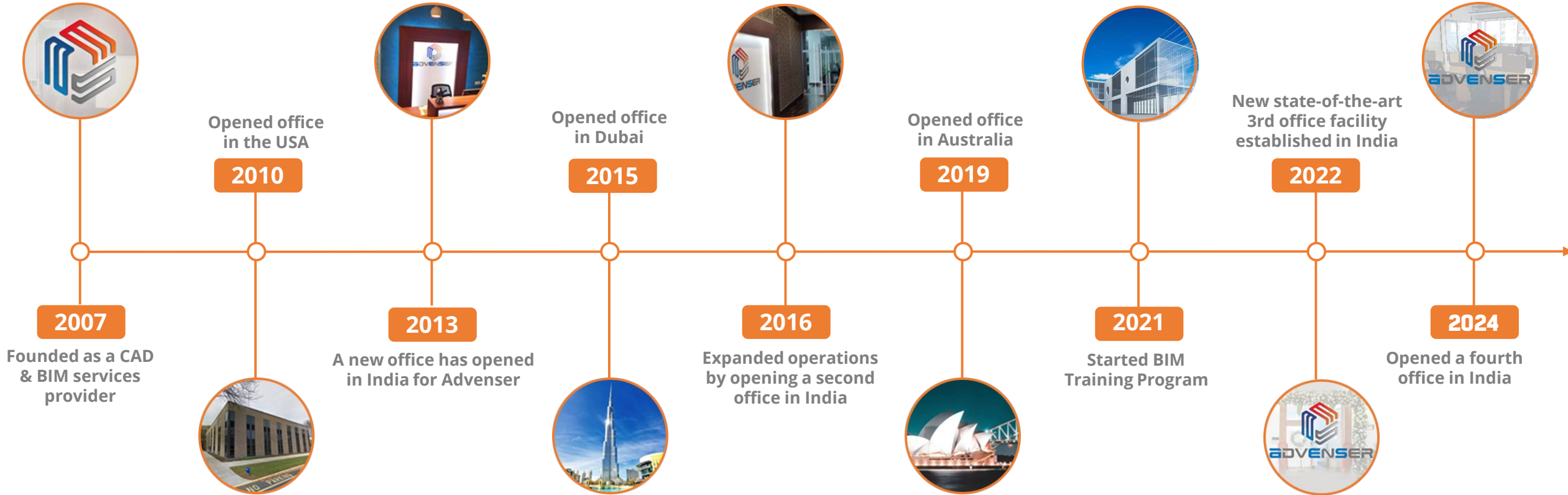


## Commitment to Continuous Improvement

Continuous process enhancements to increase efficiency and deliver greater value.



# OUR HISTORY



# OUR CLIENT BASE

---



# PARTNERS & ASSOCIATIONS



Technology experts and Industry Associations that extend and enhance learning and productivity through training & collaboration



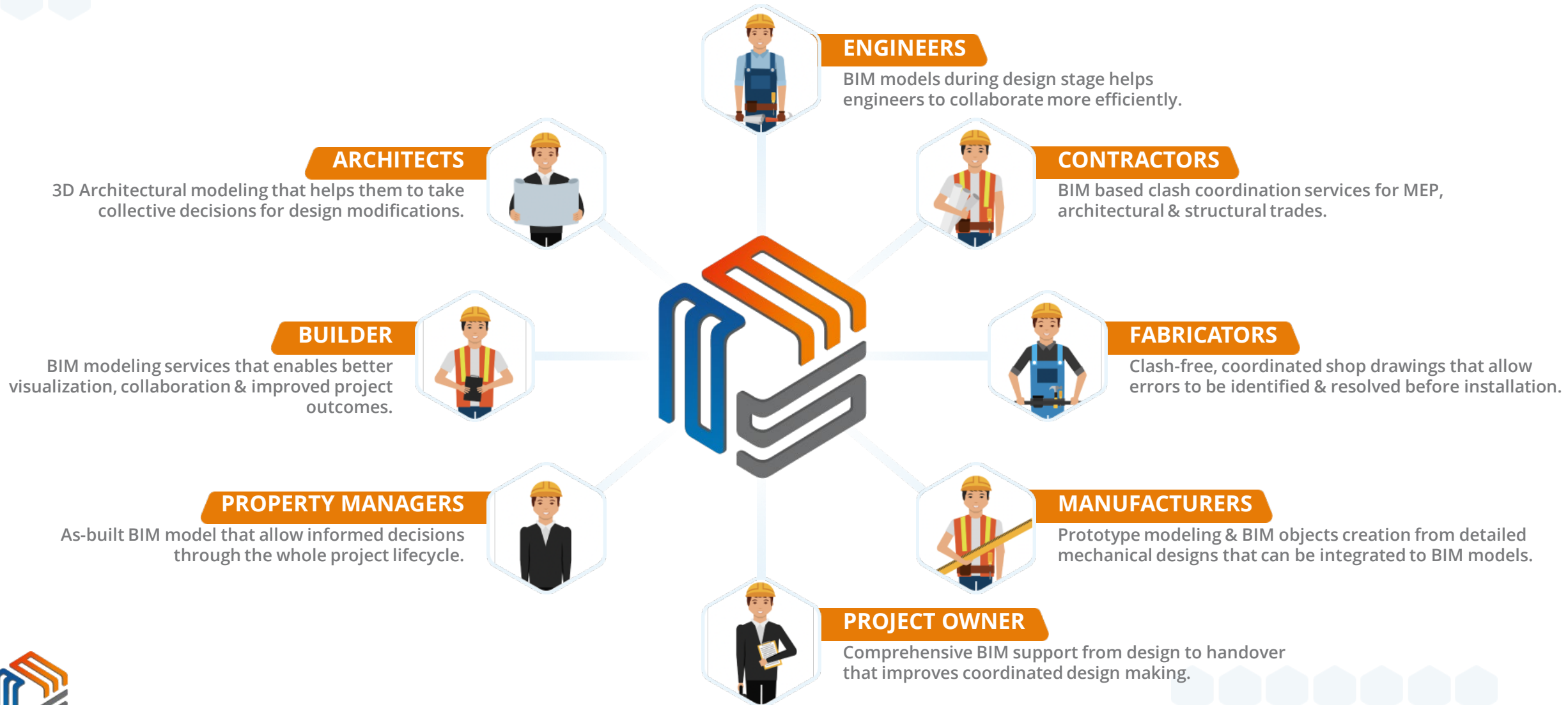
# POLICIES GUIDING OUR OPERATIONS

With projects spanning diverse geographies and business practices across, Advenser consistently strives to align countries its operations with a robust policy framework to ensure compliance with country-specific regulations, global standards, and cultural expectations.

- ✓ Data Protection, Privacy, Confidentiality, & Cyber Security Policy
- ✓ Code of Conduct and Ethics Policy
- ✓ Environmental Policy
- ✓ Anti-Corruption and Anti-Bribery Policy
- ✓ Labour Compliance and Human Rights Policy
- ✓ Modern Slavery prevention statement
- ✓ Supplier Diversity and Community Inclusion Policy
- ✓ Workplace Health and Safety Policy
- ✓ POSH (Prevention of Sexual Harassment) Policy



# ADVENSER IN BIM SUPPLY CHAIN



# OUR SERVICES

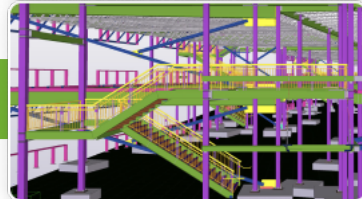
ARCHITECTURAL BIM



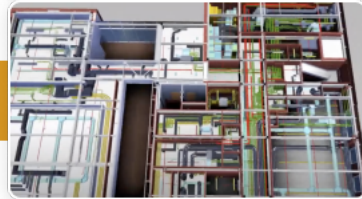
FAÇADE DETAILING



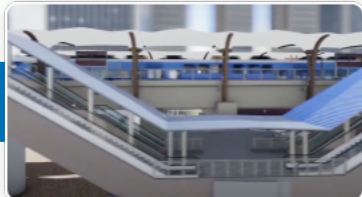
STEEL DESIGN AND DETAILING



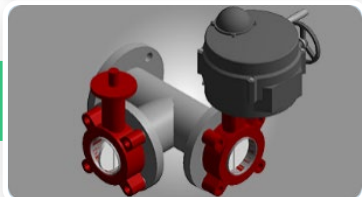
INTEGRATED BIM



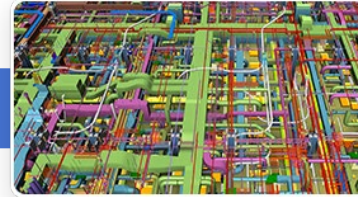
INFRASTRUCTURE BIM



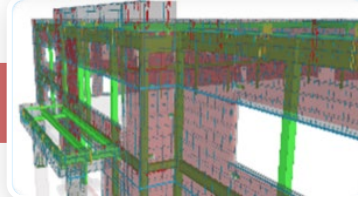
BIM OBJECT LIBRARIES



MEP BIM



PRECAST / REBAR DETAILING



SCAN TO BIM



INDUSTRIAL PLANT DIGITIZATION



MECHANICAL CAD/CAM



BIM CONSULTING AND TRAINING



# ARCHITECTURAL MODELING

Intelligent visualization of projects with broad level of details and calculations to improve the quality of delivery and turnaround the time.

**ARCHITECTURAL BIM**

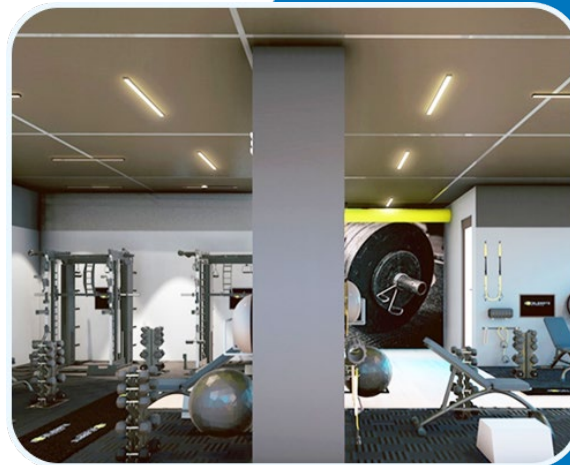
**SHOP DRAWING CREATION**

**DESIGN DEVELOPMENT**

**CONSTRUCTION DOCUMENTATION**

**POINT CLOUD MODELING**

**MILLWORK SHOP DRAWINGS**



# MEP & HVAC BIM

We place ourselves before the AEC industry as a conversant workforce of MEP/HVAC engineers providing MEP BIM services to various sectors which include educational institutions, healthcare, plants, residential, commercial and industrial buildings.

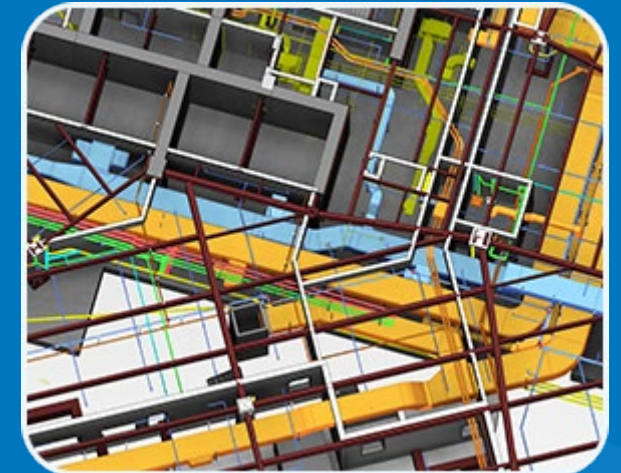
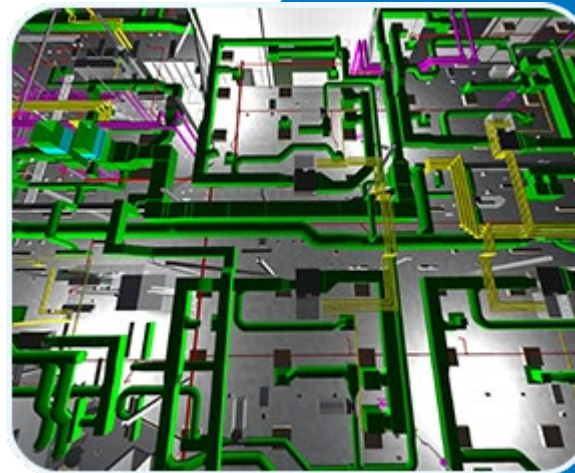
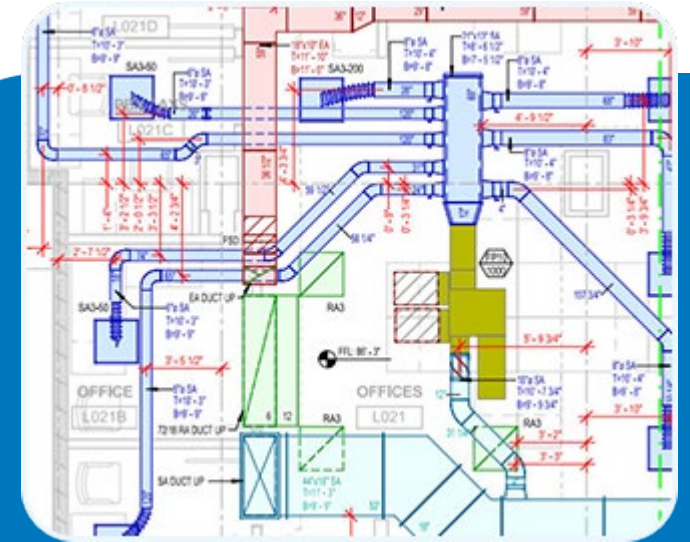
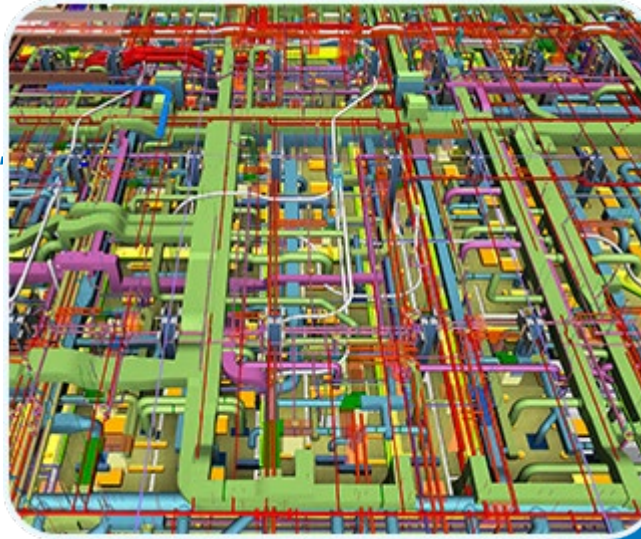
**3D COORDINATION & CLASH REPORT**

**SHOP & FABRICATION DRAWING**

**DESIGN DEVELOPMENT**

**POINT CLOUD MODELING**

**SPOOL DRAWING**



# STEEL DESIGN AND **DETAILING**

An established lineup of effective detailing services to ensure effective management of design and project constructability for reduced cost of installation and business growth.

**STRUCTURAL STEEL DETAILING**

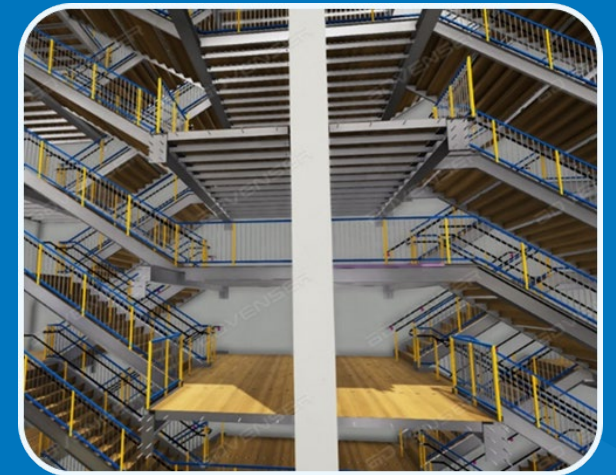
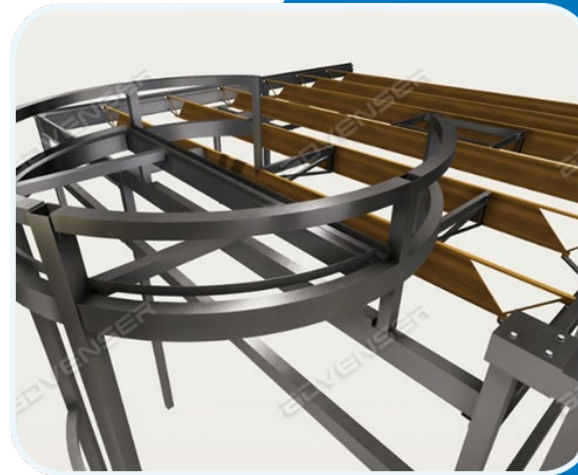
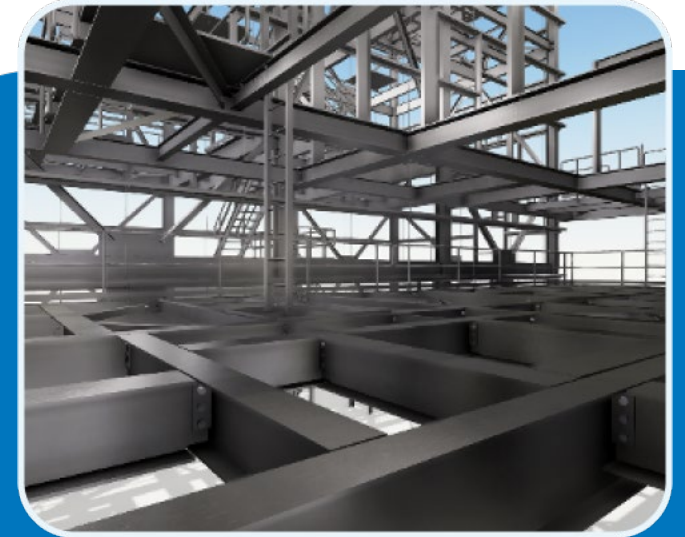
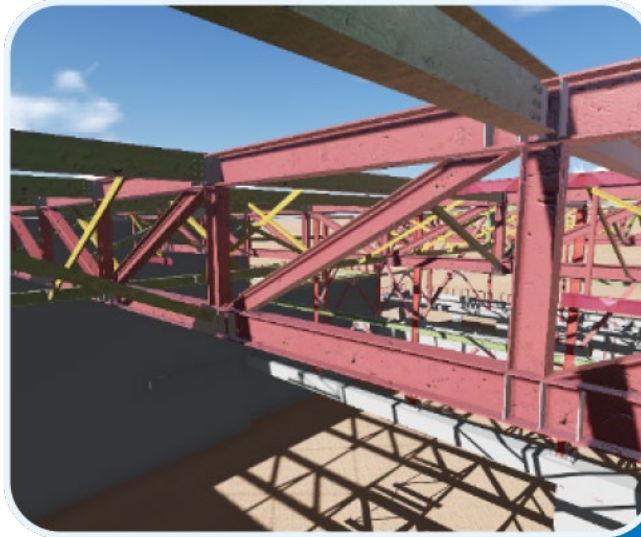
**STRUCTURAL 3D MODELING**

**ESTIMODELING SERVICES**

**MISCELLANEOUS STEEL DETAILING**

**STRUCTURAL STEEL CONNECTION DESIGNS**

**STRUCTURAL STEEL CONNECTION CALCULATIONS**



# PRECAST/REBAR CONCRETE DETAILING

Expert concrete detailing services, including precast and rebar detailing, to ensure design precision, reduce costs, and streamline project execution for improved efficiency and growth.

## PRECAST PANEL DETAILING

BAR BENDING SCHEDULES (BBS)

REBAR PLACEMENT DRAWINGS

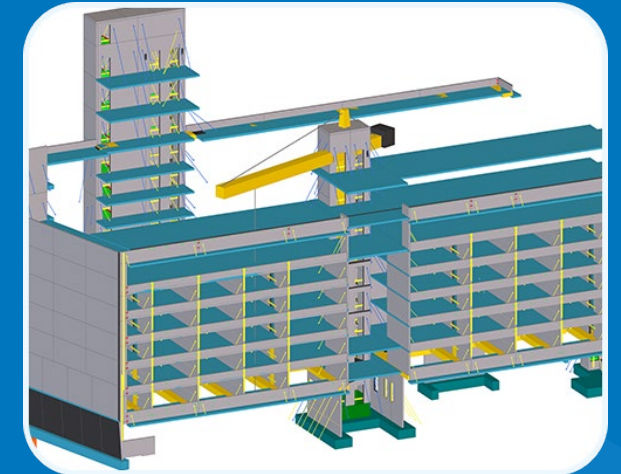
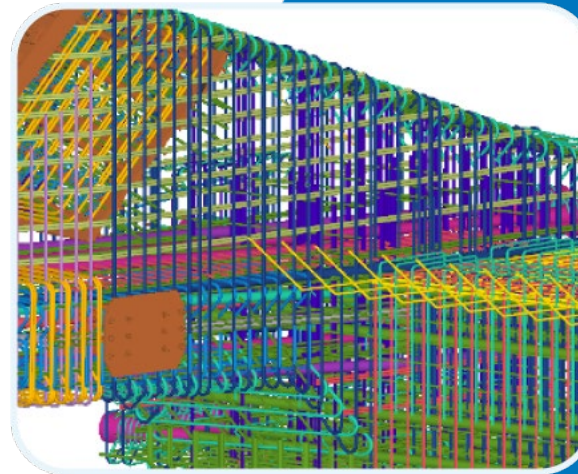
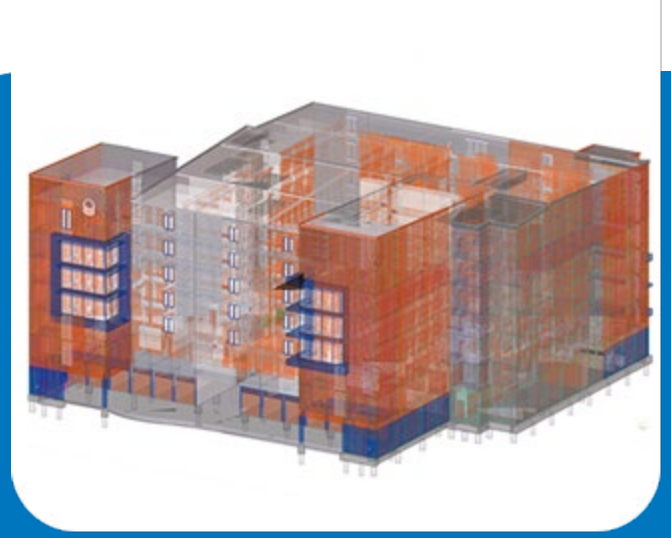
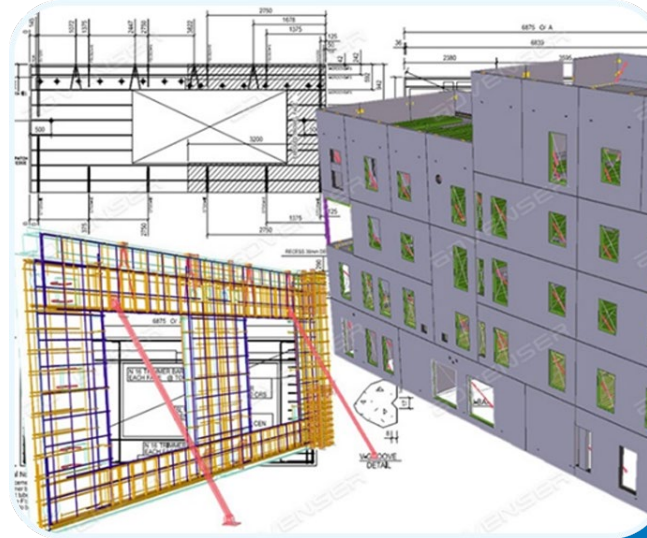
PRECAST SHOP DRAWINGS/SHOP TICKETS

PRECAST DOWEL LAYOUT

PRECAST BRACING LAYOUT

PRECAST MARKING/PLAN AND ELEVATIONS

QUANTITY TAKE-OFFS (BOM)



# FACADE ENGINEERING SERVICES

Accurate shop & fabrication drawings enabling clients to plan for optimized & balanced production of building envelope systems

**CURTAIN WALLS**

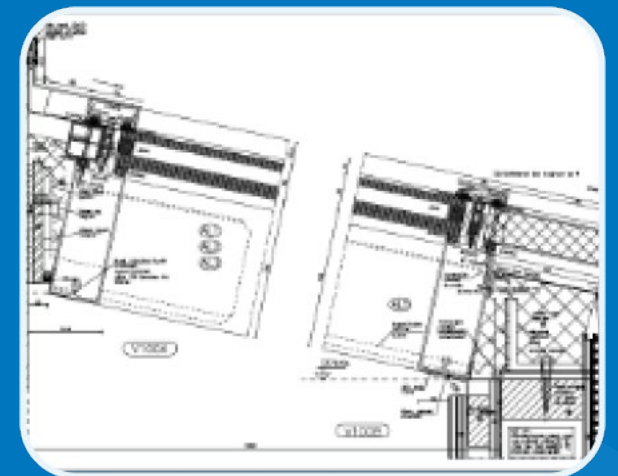
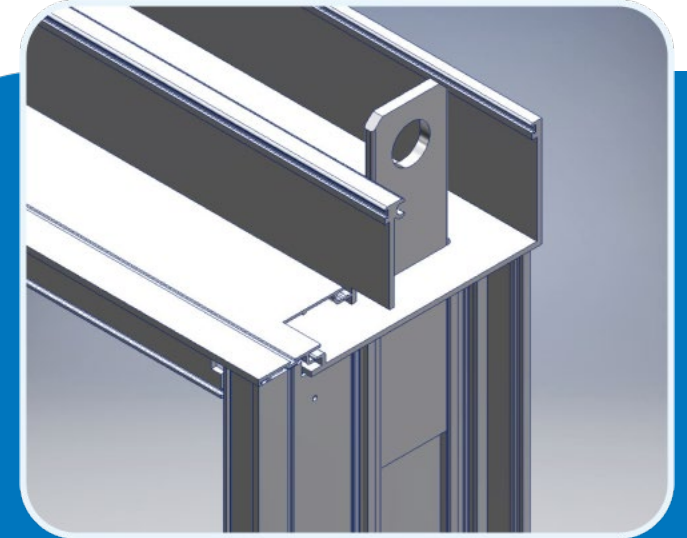
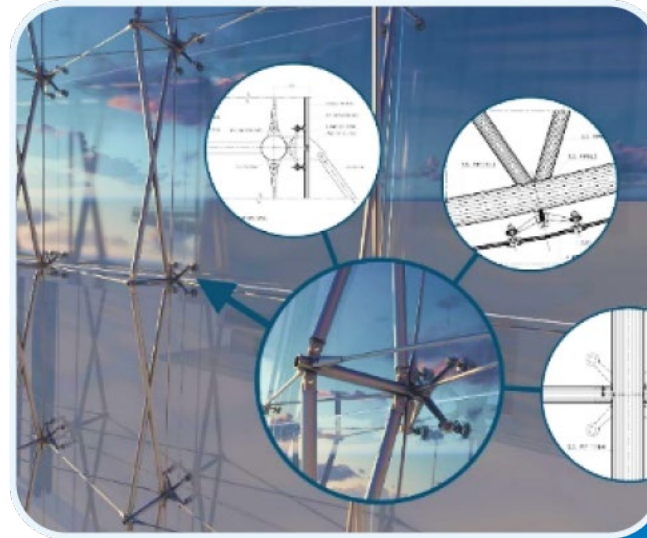
**SPIDER GLAZING**

**SHOP FRONTS & FRAMELESS GLASS**

**METAL PANELS & HAND RAILS**

**SKY LIGHTING & CANOPIES**

**WINDOWS, SLIDING/PARTITION DOORS**



# CLASH DETECTION & RESOLUTION

Seamless coordination of MEP with Architecture & Structural trades, allowing all systems to work in perfect synchronization and at the same time maintaining the design intent

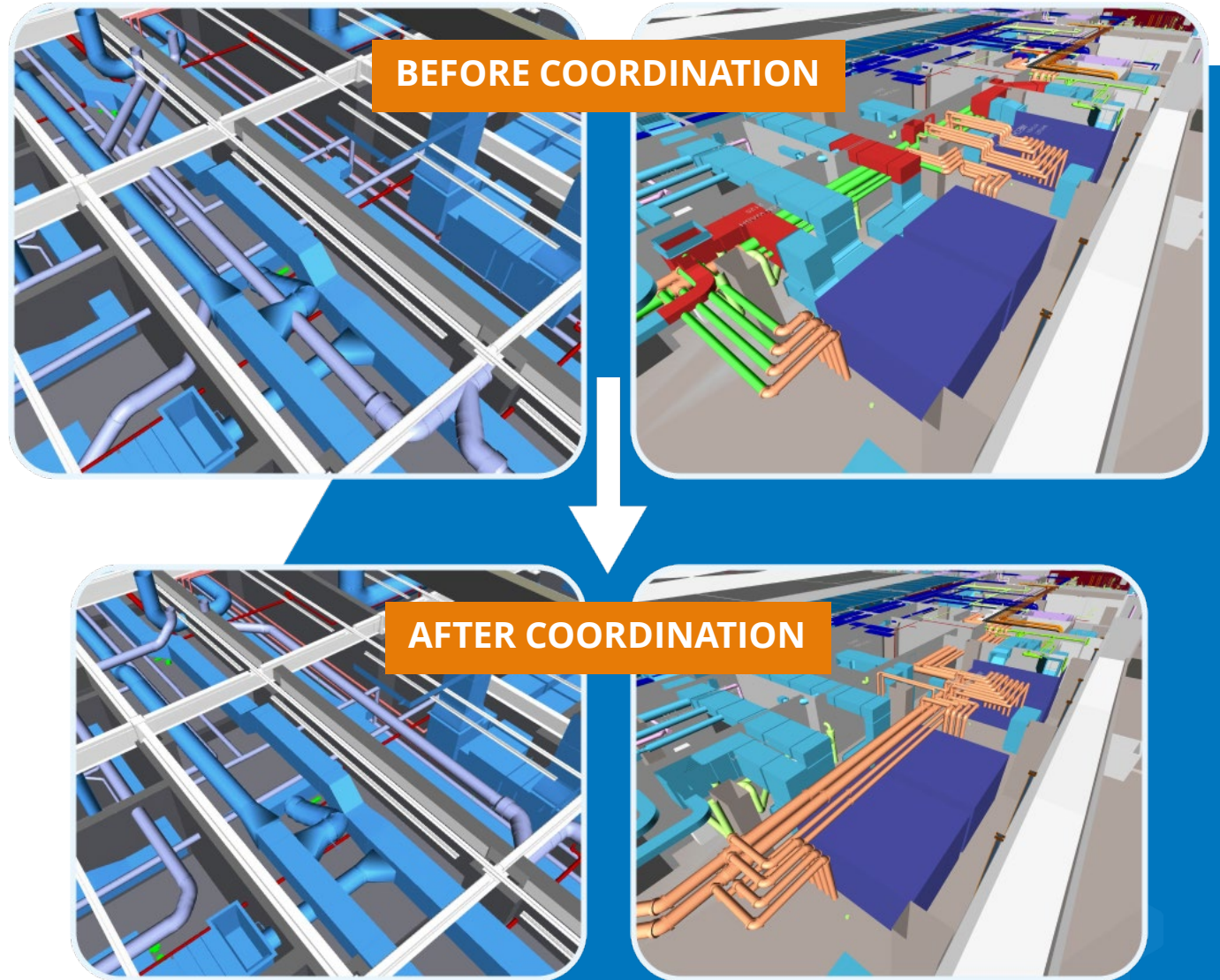
**ARCHITECTURAL BIM**

**STRUCTURAL BIM**

**MEP BIM**

**RESOLUTION OF CLASHES**

**ONLINE COORDINATION MEETINGS**



# INTEGRATED BIM PROJECT DELIVERY

Helping organizations leverage the potentials of BIM integrating architectural, structural, mechanical & plumbing systems

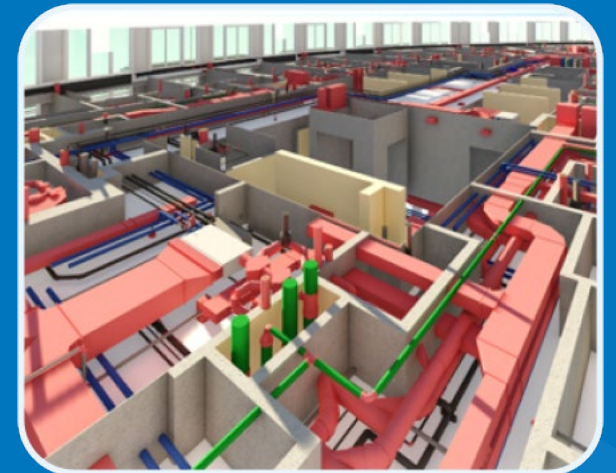
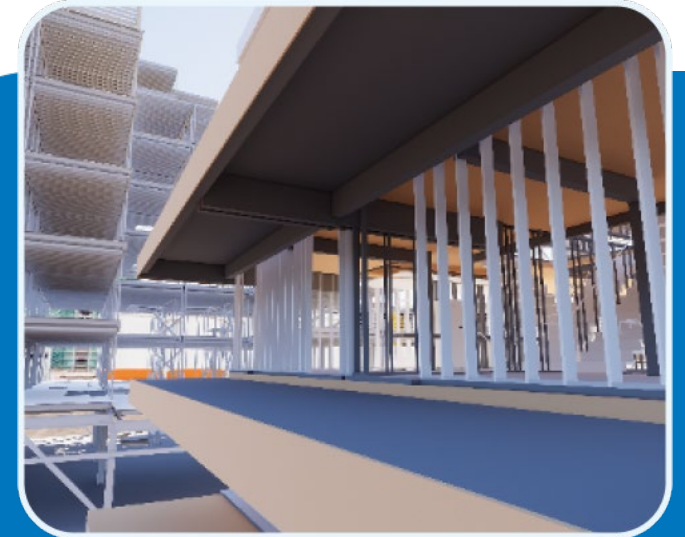
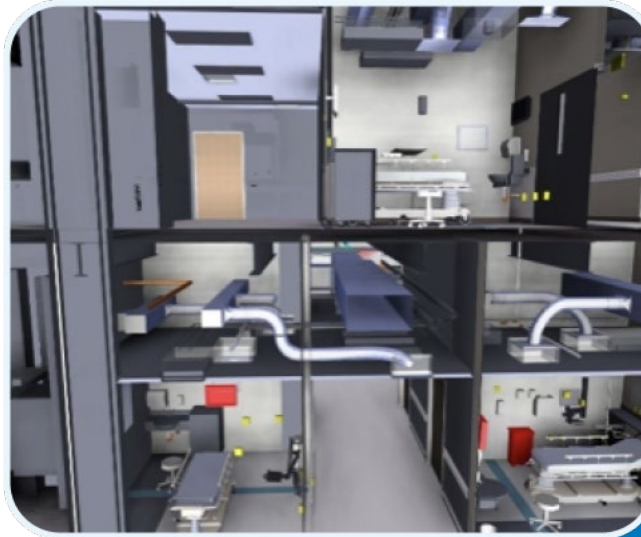
**ARCHITECTURAL BIM**

**STRUCTURAL 3D MODELING**

**HVAC & PLUMBING MODELING**

**BIM CLASH COORDINATION**

**SHOP/FABRICATION DRAWINGS**



# INFRASTRUCTURE BIM

Integrated approach to model multi-disciplined trades for utility structures, power stations, water treatment plants, highways & bridges

**BIM FOR WATER TREATMENT PLANTS**

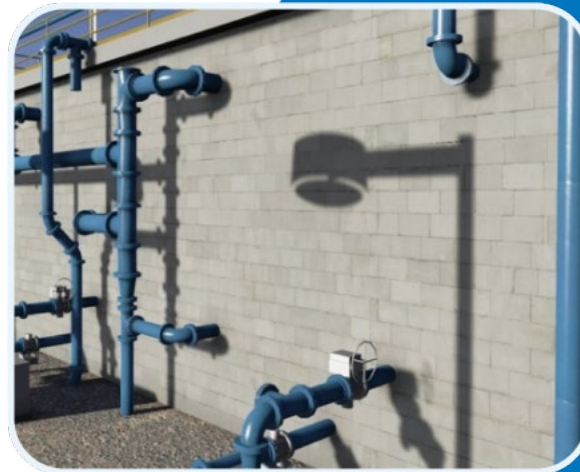
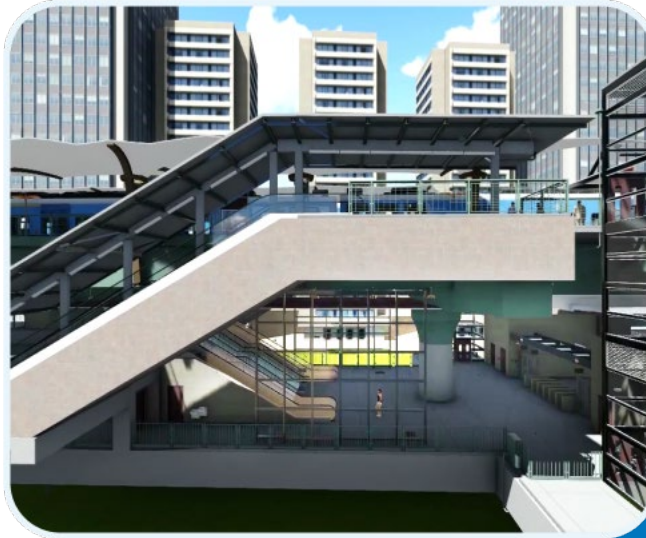
**LANDSCAPE & SITE MODELING**

**BIM FOR TUNNEL CONSTRUCTION**

**BIM FOR BRIDGE CONSTRUCTION**

**MARINE/OFFSHORE STRUCTURE MODELING**

**BIM FOR TRANSPORTATION**



# MECHANICAL CAD/CAM

Our core expertise lies in providing 2D drafting & CAD 3D modeling services to clients for the fabrication & manufacturing of mechanical components.

**SHOP DRAWINGS**

**FABRICATION DRAWINGS**

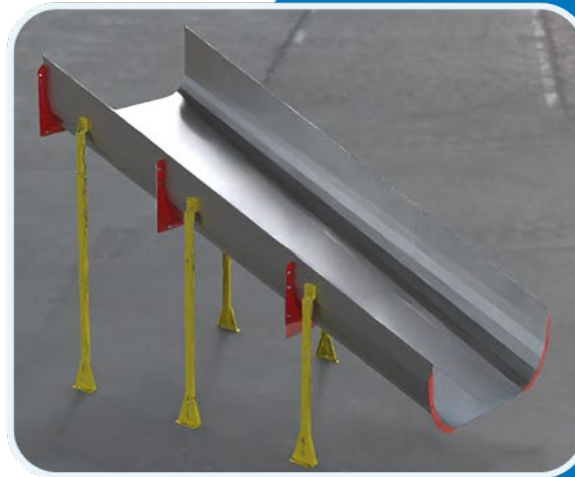
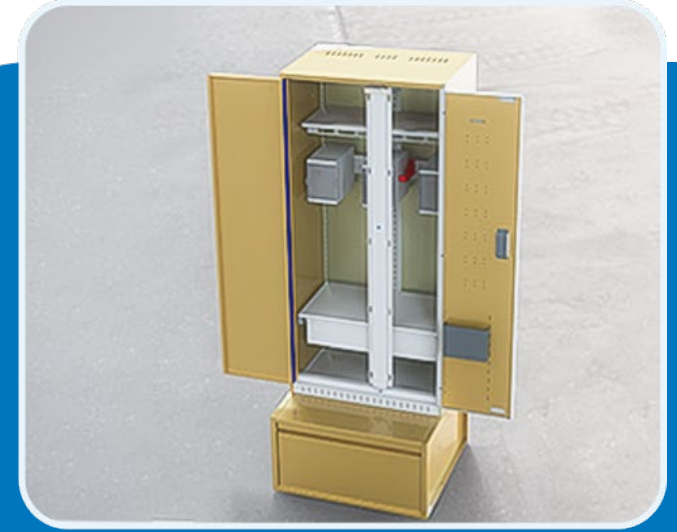
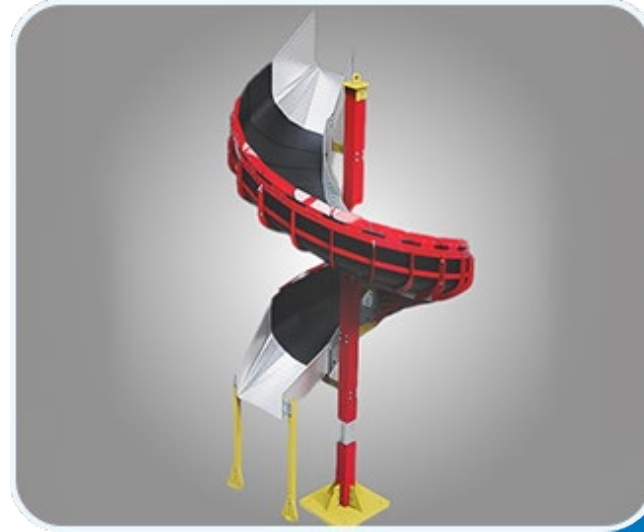
**ASSEMBLY DRAWINGS**

**SHEET METAL DRAWINGS**

**ISOMETRIC DRAWING**

**PARAMETRIC MODELING**

**3D SOLID MODELING**



# INDUSTRIAL PLANT DIGITIZATION

We create intelligent 3D models for site preparation, structural design and detailing, building design, piping and equipment layout. Enhance and integrate multidisciplinary collaboration and minimize data loss across your project.

**LiDAR SCANNING**

**REVERSE ENGINEERING**

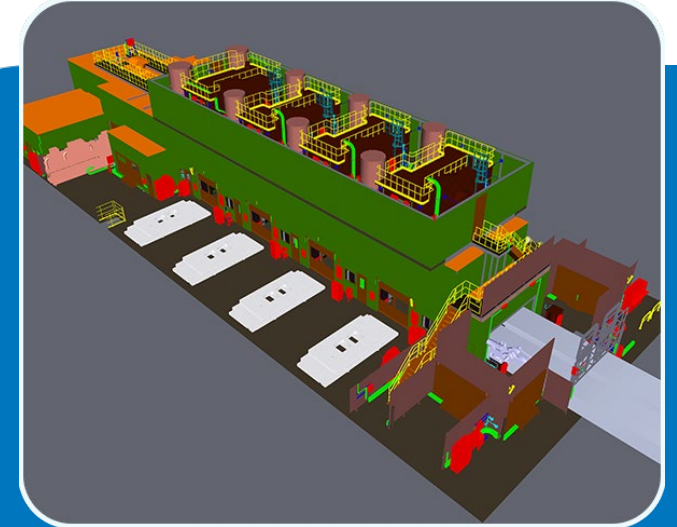
**SCAN TO DWG**

**AS-BUILT DOCUMENTATION**

**3D MODELING**

**LEGENDARY DRAWING**

**P & ID, GA & EQUIPMENT DRAWING**



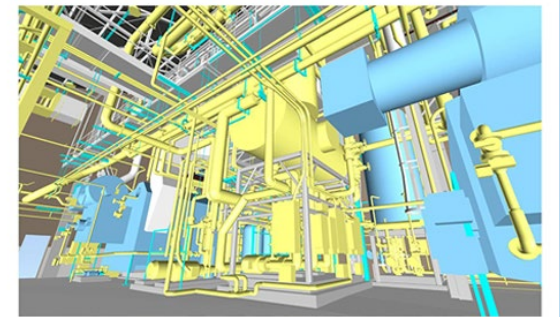
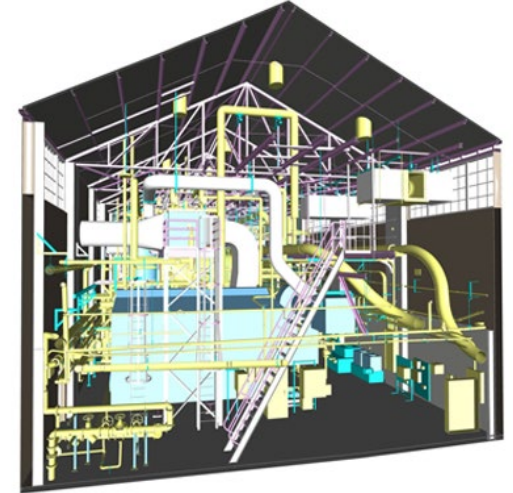
# POINTCLOUD SCAN TO BIM MODELING

The 3D BIM model that we create from laser scan data serve as accurate models for as-built purposes as well as for retrofit, refurbishment and renovation projects.

**ARCHITECTURAL CONVERSION**

**STRUCTURAL CONVERSION**

**MEP CONVERSION**



# REVIT FAMILY CREATION

Creation of standard and customized revit families for the retail, manufacturing and the construction industry from the manufacturer's submittals or even hand sketches.

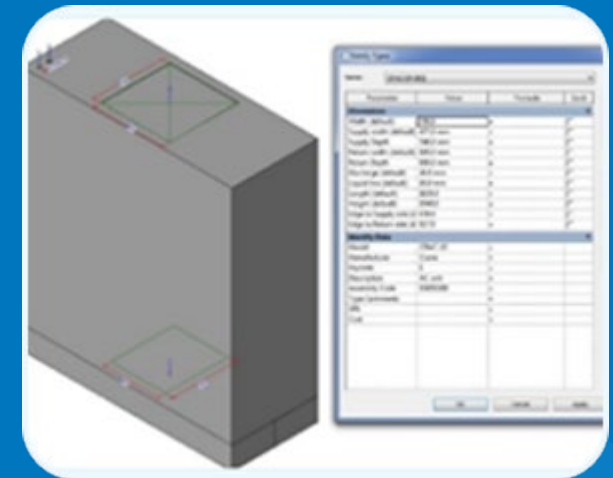
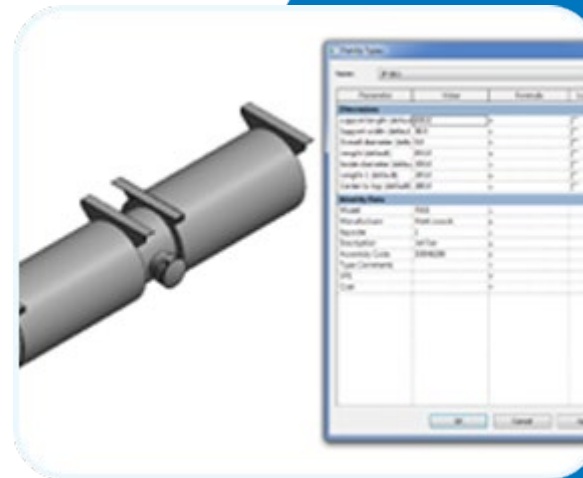
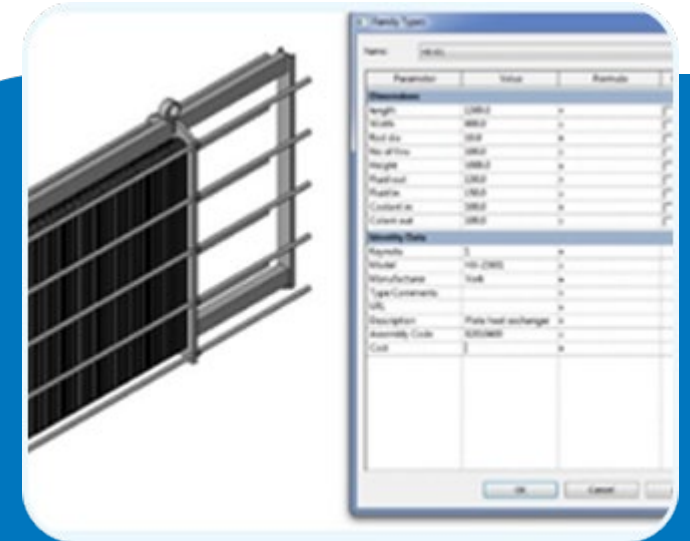
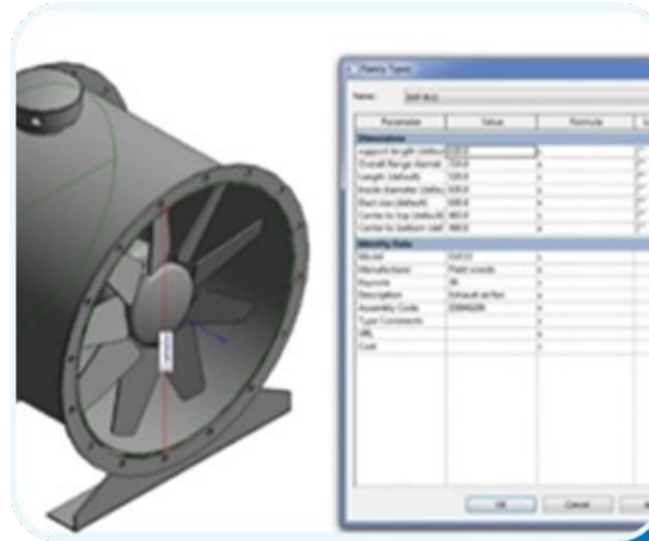
**ARCHITECTURAL ELEMENTS**

**STRUCTURAL COMPONENTS**

**MECHANICAL FITTINGS**

**PLUMBING FIXTURES**

**PRODUCT LIBRARIES**



# BIM CONSULTING SERVICES

Since 2007, we have been assisting construction companies, general & specialty contractors in their migration to BIM from CAD. We act as a strategic BIM partner to the client educating and training them for seamless migration from CAD drafting to BIM implementation.

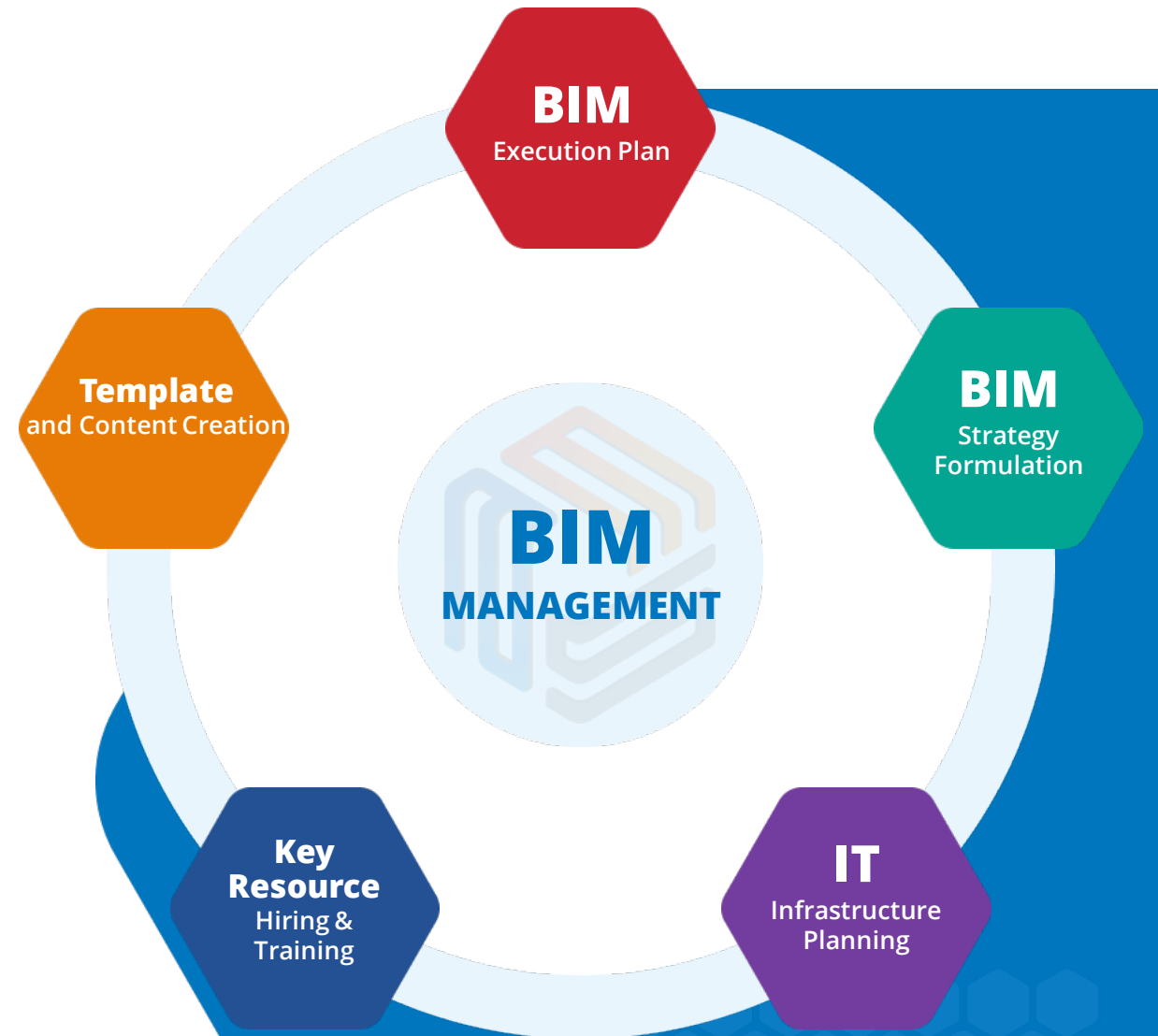
**BIM MODEL AUDIT**

**OFFSHORE BIM TEAM**

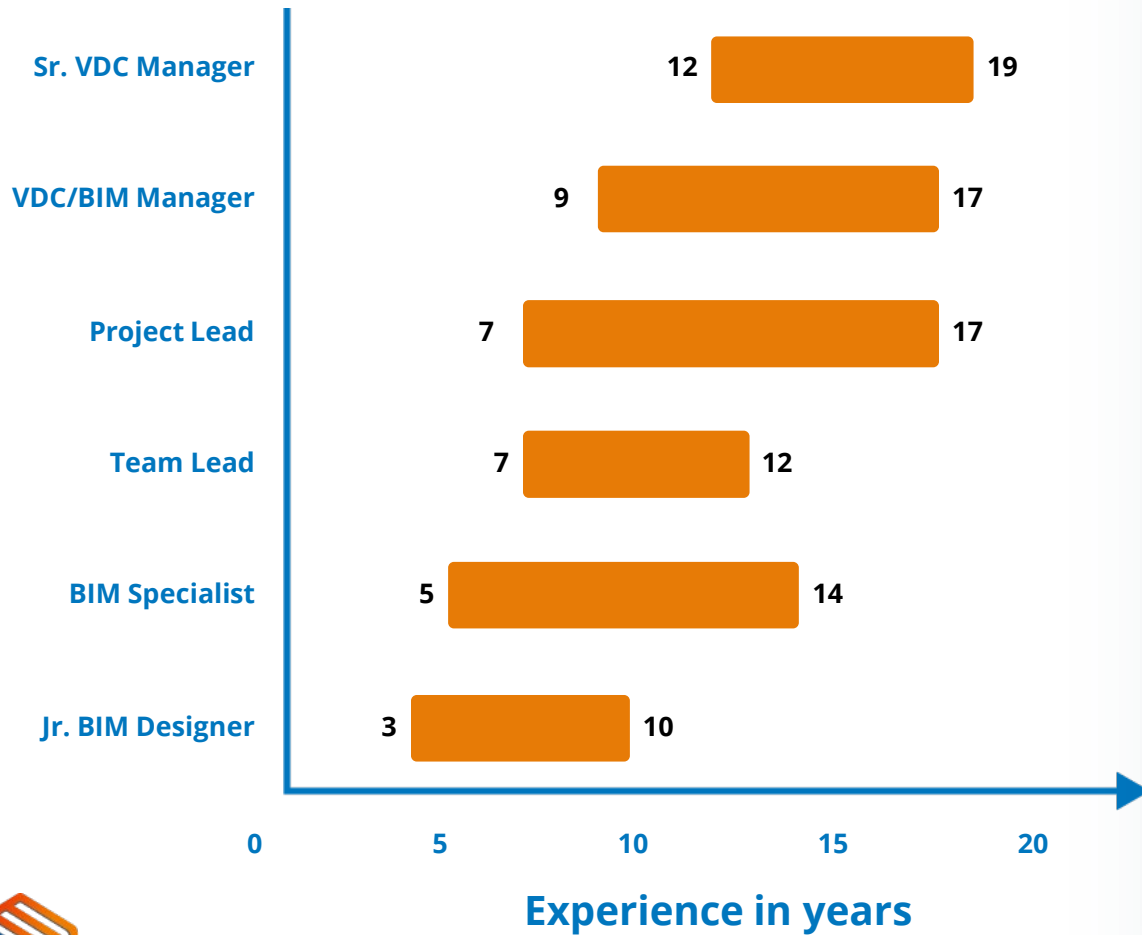
**BIM IMPLEMENTATION PLANNING**


























**BIM TRAINING**

**ON-SITE BIM SUPPORT**



# TEAM PROFICIENCY AND SOFTWARE PROFICIENCY



 Civil 3D	 FormIt Pro	 Construction Cloud
 InfraWorks	 Insight	 MagiCAD
 Revit	 3ds Max	 LogiKal
 ReCap Pro	 Inventor	 Tekla
 AutoCAD MEP	 Fabrication CADmep	 STAAD.Pro
 Autodesk Docs	 Advance Steel	 Solid Edge
 Navisworks Manage	 AutoCAD Plant 3D	 RebarCAD
 Dynamo	 BIM Collaborate Pro	 RGS REBAR
 Trimble EC CAD, Field Technology	 Building Data	 Rhinoceros
 CloudWorx	 Synchro	 Revizto

# CONTACT US



## USA

Five Neshaminy Interplex, STE 205  
Trevose, PA 19053, USA

Phone: +1 (215) 934 2868

1341 W. Mockingbird Lane, STE 600W  
Dallas, TX 75247, USA

Phone: +1 (215) 934 2868



## UAE

P.O. Box No: 118901,  
Dubai, UAE

Phone: +971 50 237 7430



## INDIA

43 A, E block, 4F CSEZ, Kakkanad  
Kochi, Kerala, India. Pin 682 037

Phone: +91 484 298 8448

403, 4F, Lulu Cyber Tower 1, Infopark  
Kochi, Kerala, India. Pin 682 042

Phone: +91 484 404 0708

7th Floor, Commerce Mantri,12, 1 & 2,  
Bannerghatta rd, BTM Layout, Bengaluru.  
Pin: 560 076

Phone: +91 890 456 9211



## AUSTRALIA

C/- OPLEX, Governor Macquarie Tower  
Level 15, 1 Farrer Place, Sydney  
NSW 2000, Australia.

Phone: +61 363 877 090



## GERMANY

Dr. Ulrich Dietz

Email: [udietz@advenser.net](mailto:udietz@advenser.net)

Phone: +49 7724 915924-0



[www.advenser.com](http://www.advenser.com)



[info@advenser.com](mailto:info@advenser.com)



**THANK YOU**

